

# *The* **Hex-Press**

YOUR FREE HEXTHORPE COMMUNITY NEWSPAPER No. 85 December 2008  
Sponsored by HEXQOL, the Hexthorpe Quality of Life Initiative

---

## **A BIG THANK YOU TO CATH LAWSON**

**Cath Lawson, the head of Hexthorpe School is leaving the school at the end of this term. Cath has been an outstanding Head Teacher. The Hexthorpe School has developed into a first class school. At the last Ofsted inspection it was described as a school that 'is outstanding in every single category'.**

**Cath has made an enormous contribution to the community; the school has become very much a part of the fabric of local life. She has created a school of which the community is justifiably proud. There are many children and parents who are indebted to her. We are sure that all the people of Hexthorpe wish Cath well for the future.**

*We are pleased that Cath has written an article for the Hexpress and we are proud to publish it here.*



It's hard to believe that almost twenty years ago I was interviewed for the post of head teacher at Hexthorpe First School. As I waited nervously in the Mansion House after an interview grilling for the headship post by the Board of Governors who included Jenny Barlow and Joan Reasbeck, I thought about the road that brought me to Hexthorpe.

I had previously worked at the school in an advisory capacity on behalf of Doncaster Local Education Authority. I enjoyed working with the pupils and staff, had noted the friendly atmosphere and looked forward to my visits there. On learning that Jean Williams, the head

teacher was taking early retirement due to ill health, one of the teachers, Pat Holmes who sadly died some years ago, casually asked me if I might be interested in applying for the post. It was strange really as I had never considered that particular career route, and was more interested in advisory work, but I thought well....why not. So I applied and the rest is part of my own career history.

**The first few years in the school were challenging although there was a good ethos and spirit but there was a lot to be done.**

*(continued on page 3)*



# WHO'S WHO

## Local Councillors

Stuart Exelby 70 Carr View Avenue, Tel 329521  
Glyn Jones 20 Lister Avenue, Balby DN4 8AR  
Tel. 816881  
John McHale Tel. 326350

## Methodist Minister

John Hartley 1 Cedar Road, Balby Tel: 852024

## The Junction Manager

John Crawford, 61 Hexthorpe Road Tel: 349341

## Parish Priest

The Rev. J. Gilbert, 2 Riverside Close, Hexthorpe  
Tel: 852057

## Hexthorpe Community Constable

contact P.C. Tyrone Ali Tel: 0114 220 2020

## MOBILE LIBRARY

### On Fridays:

Patrick Stirling Court 9.30-10.00pm  
Shadyside: (opp. Windle Rd) 10.05-10.35am  
Eden Grove 10.40-11.10am  
Shadyside (St Jude's Church) 11.15-11.45am

### *Any letters, articles, adverts contact:*

Donald, 31 Old Hexthorpe, Tel: 852521

### Published by:

**Hexqol - Hexthorpe Quality of Life**

**Advertisements: Contact Joan Reasbeck,  
31 Old Hexthorpe, Tel. 852521**

**Advertisements** in each issue cost from  
£10.00 per issue to £40.00 according to size.

### **Special Offer! - for all Doncaster Rovers fans and railway enthusiasts:**

A superb print of the engine 'Doncaster Rovers' built  
at the Hexthorpe Plant Works; ready for framing. Size:  
approx 19" by 15" (or approx 48cm by 38cm)

Would make a great Christmas present! **Now  
further reduced to only £5.** ALL proceeds for the  
work of the Junction.

**Available from Donald at 31 Old Hexthorpe, tel:  
852521**

# WEEKLY EVENTS

## Methodist Church Hall

### S.A.R.A Group (Stay and Rest Awhile)

Mums and Tots Group Thursday 9.15 - 11.15 am

### Mini Cruz

Key Stage 1 children Tuesday 3.30 p.m.

### Mega Cruz

School Years 3-6 Tuesday 5.30 p.m.

### The Group with No Name

School Year 7 and upwards Tuesday 7.15 p.m.

**You are invited on any Sunday to the Worship**

### Services at Hexthorpe Methodist Church

10.30 am and 6.00 pm

\*\*\*\*

## The Parish Church of St Jude

### Sunday Service times

9.00 a.m. Morning Prayer

10.30 am Parish Mass and Sunday School

### Hexthorpe Parish Hall, Laughton Road, Hexthorpe

<b>Monday</b>	1.45-3.15 pm	Yoga
	7.00-10.00 pm	Line Dancing
<b>Tuesday</b>	5.45-7.15 pm	Tae Kwon Do
<b>Wednesday</b>	6.45-8.30 pm	Yoga
<b>Thursday</b>	5.45-8.30 pm	Tae Kwon Do
<b>Friday 2nd &amp; 4th in the month</b>		
	7.00-9.00 pm	Prize Bingo
<b>Saturday</b>	8.45-10.15 a.m.	Tae Kwon Do

**Hire of hall - phone 321569**

Up to 5.30 pm £15 per hour

After 5.30 pm £20 per hour

**Regular meetings for you to attend and hear  
the latest news concerning Hexthorpe and also  
for you to ask questions.**

### TARA

Hexthorpe Tenants and Residents Meeting  
Every third Tuesday of the month at 7.00pm in  
Hexthorpe School Hall.

It costs £1 a household per year to join.



*(Continued from page 1)*

However I soon realised that I had inherited a hard working and committed staff team who wanted change and were prepared to work with me to develop the school. We rapidly achieved some good results and had built an excellent team when we were told that our much-loved school was due for closure on account of the Local Education Authority plans for re-organisation.

After some memorable and enjoyable celebration events at the First School we were all ready to move to the newly established Hexthorpe Primary School in September 2005. For the staff from the First School there was a lot of nostalgia associated with leaving a school steeped in memories for generations of pupils and part of Hexthorpe's history. For the staff from the Middle School there was probably a feeling of being taken over in terms of the increased numbers of staff and pupils.

After a period of time, often fraught with anxiety and challenge, the school began to emerge as a potentially united and successful organisation. There were lots of problems initially that required diplomacy and sensitivity when dealing with them. At times it was very emotionally and mentally draining, stressful and exhausting. However, throughout this process the needs of the children always came first and the majority of staff worked hard and did their best on behalf of the school.

I recall writing an article for the Hexpress in 1995 in which I stated:

**'Well what about the future? I intend to work closely to build a new staff team who will have a high degree of professionalism and commitment towards the children of Hexthorpe. I believe that the decision to establish a through school in Hexthorpe was a positive move and look forward to developing a new school with its own distinctive character and ethos.'**

As I look back over the past 13 years and prepare to leave the school, it is with a feeling of

regret but, at the same time, I feel so proud that we have established a school at the centre of the community of Hexthorpe which has got an extremely distinctive character and ethos. It is recognised as a centre of excellence not only on behalf of its standards of work and behaviour but also on account of its very innovative and pioneering approach. I consider that now we have a very highly professionally developed staff team and are always at the forefront of educational thinking. We have our vision about how primary education can maximise the potential of children and constantly work hard to put it into practice constantly using the mantra, 'quality, standards, high expectations' so the principles become embedded in the school's culture.

In 2007 Ofsted said the school was 'outstanding in every single category' and gave us a glowing report. Of course, our success would not have been possible without the fantastic support the school has always received from parents and numerous members of the community, particularly the Methodist Church and Hexthorpe Crimpsall Allotment Society. Together we have travelled far and have worked incredibly hard - pupils, parents, teachers and governors - to create a place where everyone has the opportunity to succeed and achieve their goals. The school is like an extended family and provides a welcoming and nurturing atmosphere within which children and adults feel happy and secure.

I feel that after almost twenty years at Hexthorpe, it is now time for me to move on so I intend to re-focus, re-energise and re-invent myself in a new direction by working on aspects of advice and consultancy in other schools. It's been a very difficult decision to make, but one thing I know for sure is that the school and the community of Hexthorpe will always have a special place in my mind and heart. Most of all, I will miss the children because over the years they have given me so much joy, affection and respect. It has been amazing to watch them move through the school and develop in confidence,

*(Continued on next page)*



self esteem and become increasingly independent. Most of the time (!) they are absolutely delightful, a pleasure to know and a credit to their parents.

I want you to know that I have always felt privileged to work here and would like to convey an enormous thank you to everyone who steadfastly supported our efforts throughout the years. This is your school, in the hub of your community and it is a very vibrant and exciting learning environment for your children. I know you will always work hard and support the school in fulfilling its vision statement, 'Learning together. Growing together. Aiming ever higher'.

Finally and most of all I want to say thank you to the children in our school who remind me on a daily basis, because of their affection and enthusiasm for learning, why I chose this profession over forty years ago. It is for them that we need to keep aspiring to excellence. They are our future!

# Angies

## *Tasty Corner*

Café & Coffee Shop  
(Previously 'Rumbling Tum')

91 Hexthorpe Road  
Hexthorpe

### Opening Hours:

Mon to Fri - 7a.m. - 3 p.m.

Saturday - 7 a.m. - 2 p.m.

Now open Sunday - 10a.m.-2p.m.

Telephone Orders Welcome  
Tel: 01302 760564

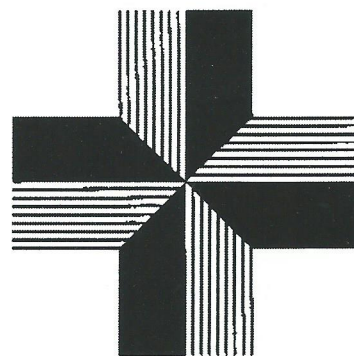
# Hexthorpe Pharmacy

66 Hexthorpe Road, Hexthorpe

**For all your Pharmaceutical Needs TELEPHONE: 367950**  
**FREE PRESCRIPTION COLLECTION & DELIVERY**  
Wherever your Doctors are:- Doncaster, Balby, Edlington . . .

### PATIENT MEDICINES MANAGEMENT:-

- Do you understand your medicine
- Compliance Charts
- Monitored Dosage System
- Domicillary Visits
- NEBULISER SALE & SERVICING
- T.E.N.S. Machines
- Pain relief without pills
- Trial Machines available
- BLOOD GLUCOSE METERS



*We would like to help, please do ask*



# ACTIVITIES DAY AT HEXTHORPE FOOTBALL FIELD

*Report by Alex Evans*

Young people in Hexthorpe enjoyed an afternoon of activities on the football field at Hexthorpe over half-term. Approximately 30 youngsters took part in the activities. The focus was on rounders and football, but this was broken up by entertainment with Punch and Judy and balloon art.

Following on from the success of the toddlers play area the local Cracking group are working in partnership with Groundwork Dearne Valley, Doncaster MBC and Doncaster NDC to develop the next stage which aims to provide better sports facilities for older children in the area. The group are working to secure funding for a small multi-use games area on the field.

Mike Godfrey, Chair of the Cracking group says, 'The new play area is really well used by young

children and families; we want to do something now for local teenagers.'

- Groundwork Dearne Valley carries out regeneration programmes throughout Barnsley, Rotherham and Doncaster. These are based in communities with the highest needs and are focused on local people to help them plan, improve and care for their environment.
- Groundwork is a federation of Trusts in England, Wales and Northern Ireland, each working with their partners to improve the quality of the local environment, the lives of local people and the success of local businesses in areas in need of investment and support.

*For further information contact: Alex Jones, Groundwork Dearne Valley, Elsecar Workshops, Wath Road, Elsecar, Barnsley. 01226 740077*

## Paul's

### Off-Licence

21 Hexthorpe Road

*Open 10am 'til 11pm  
7 days a week*

*\* Confectionary*

*\* Tobacco*

*\* Retail Off-Licence*

## DHALIWAL STORES

151 Urban Road

**Your Local Newsagent,  
Off-licence and Grocery**

- Dry cleaning Service
- Confectionery
- Tobacco
- Pay Point - you can pay your bills here for no extra charge

***Buy Your Lottery Tickets Here***

**OPEN 7 DAYS A WEEK**



# Local project is cream of the crop!

Hexthorpe Crimpsall allotment project has achieved a first after being the only project to win two awards at the same time in a competition run by Kitchen Garden Magazine and the National Association of Gardeners Trust. The project won first prize in the 'Best in Britain Community Allotment Project' and 'Best Allotment Site in Britain' category.



Children from Hexthorpe Primary School helping out at the allotment.

The project fought off tough competition when it wowed the judges on elements such as its Eco friendliness, use of recycling consideration of environmental issues and how it included those around it in the local community, particularly the engagement with young people in the after school clubs.

Hexthorpe Primary School was part of the award winning success at the project and for some years now it has adopted two of the allotment plots on the site. These are used by pupils during an after school club with the eager bunch of young gardeners mucking in at the site every week since June 2000.

Pete Hartshorne, Secretary of the Hexthorpe Crimpsall Allotment Society says, "The school initially organised for a group of year six pupils to visit the allotment site as part of a supervised after school club. The project was so successful the club took on a further allotment plot and it has

just grown from there. The children get a chance to sow seeds, prick out plants, pot on, plant out tend and eventually harvest. The children learn all horticultural skills relevant to the work they undertake."

This is one of the many activities being supported in NDC areas to encourage healthy lifestyles and community interaction. Pete comments, "New Deal for Communities has been very supportive of the society and provided grants for materials to secure the project for long term usage and to maximise the safety of members whilst on the site".

Hexthorpe Crimpsall School Allotment Project has received continuous praise for its continued improvement of inclusiveness and community engagement. In March 2008 further funding was used to create a raised growing area to improve conditions for disabled project members.

Pete says, "The initiative has been something of a beacon community project attracting interest from Scotland, Wales and Europe. Local schools and community groups from other areas have visited the allotments and have been encouraged to start their own projects".

The children's project has also received a letter of congratulations from HRH The Prince of Wales for its work promoting organic foods.

This project has recently been given a further boost by NDC to ensure its continuing success in the community. £115,000 has been awarded to replace the existing site office unit, which is now old and no longer serviceable.

The current unit is used as a meeting and training room for members, a classroom for the Hexthorpe Primary School project and a base from which the allotment holders from this site and two adjoining sites meet and trade their goods.

A new unit will continue to be used for these purposes and will allow a safer and more user



friendly environment that will allow an extension of existing activities and allow the development of new ones. These improvements to the project will provide a new community facility in an area that is being developed and improved, through the building of a new housing development (over 700 houses) and the upgrading of a sports field close to the allotment site.

The allotment has also benefited from the support of many other organisations such as the Doncaster Council, South Yorkshire Police, DIAL group and the Hexthorpe Quality of Life group. Also, local businesses have contributed where possible with support from Andrew Welch Glass & Glazing by supplying glass for the



A team effort - pupils from the school and the allotment society

greenhouses and T shirts for the keen young gardeners.

Group members of the allotment cultivate a full range of fruit, flowers, herbs and vegetables. Children are encouraged to taste the food grown in its raw state and take items home to share with family and friends. A food nutritionist from Doncaster Health Service has also visited the site and worked with the children promoting healthy lifestyles and simple food was cooked and sampled by the children.

Fruits and vegetables are also made into jams, relishes and pickles so the children are allowed to taste and see how different foods can be prepared and preserved. Fruit and flowers are taken out into the community by the children and given to the elderly. Other items are also given to the community at events like harvest festivals.

The allotment also encourages wildlife and has a live bees nest, wormery and pond area. The site is also adjacent to an SS (Site of Scientific Interest), home to the rare great crested newt.

Celebrating its 8th birthday this year, the site now has 50 allotment plots and the society says it has a healthy waiting list for vacant plots.

***This article is reproduced by permission of Voice, NDC for Doncaster***

## *The* **HEX-PRESS**

YOUR FREE HEXTHORPE COMMUNITY NEWSPAPER • No. 45 • DEC. 1996/JAN. 1997

# Happy Christmas



The Dell, 1996, after a snow shower

Photo: John Hoskin



# The Power of a Simple Gift

Christmas is fast approaching and we are all busy with preparations for the festive season, the presents, food and decorations are a part of these but there is also the main reason for the season that is the birth of Jesus Christ. He was the greatest gift of all time and since his birth we have given gifts in remembrance of him. There will be lots happy children in Hexthorpe on the 25<sup>th</sup> December and the following days but for many children throughout the world Christmas will be very different time.

For those living in war torn lands or famine ravaged areas or those living in orphanages or on the streets or in sewers Christmas will not be a time of happiness but just another day of relentless poverty and difficulty. Many of these children have never received a gift in their lives and this is not because their families are too uncaring to bother but because it is not possible for their families to buy gifts or it is that there is no one to care for them. It is a sad thought that for many this season of gladness is a desperate time of on going poverty and fear.

For the past 6 years we at Hexthorpe Methodist Church have been trying to do something about this situation. We have taken part in the Operation Christmas Child scheme, which takes gifts to children in some of the poorest parts of the world. The idea is that people fill shoeboxes with small gifts that children will find useful and entertaining. So for instance the boxes will contain simple things such as soap, toothpaste, toothbrush, sweets, toys, crayons, paper, hats and gloves and a cuddly toy. These are then taken to some of the children living in abject poverty and in some of the world's most difficult situations. The joy these gifts bring is almost indescribable and is a never

forgotten event. Sunday 2<sup>nd</sup> November was a very moving time as a constant stream of people brought the boxes they had prepared and laid them at the front of the church. Each year the number of boxes has increased and this time there were 237.

In the next few weeks there will be many times I think that somewhere in the world a child will be opening one of the boxes we sent and that as they do they will sense the waft of love that was packed in the box along with the gifts and they will know that they are not forgotten.

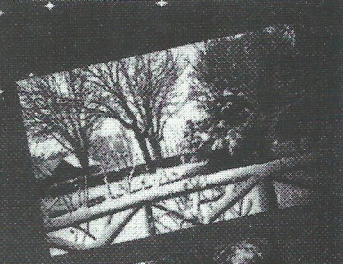
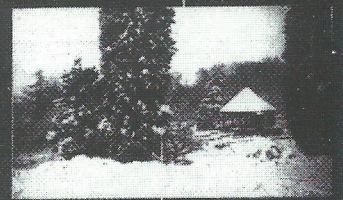
*Elizabeth Iball*

## The HEX-PRESS

YOUR FREE HEXTHORPE COMMUNITY NEWSPAPER No 33/ Dec '94/Jan '95

### In the bleak mid-winter

In the bleak mid-winter  
Frosty wind may moan  
Earth stood hard as iron  
Water like a stone  
Snow had fallen on snow  
Snow on snow  
In the bleak mid-winter  
Long Ago  
Our God heav'n cannot hold  
him  
Nor earth sustain  
Heav'n and earth shall flee  
away  
When he comes to reign  
In the bleak mid-winter  
A stable-place sufficed  
The Lord God Almighty  
Jesus Christ



Photographs supplied by  
Mr. & Mrs. Bennett, The  
Manor House, Hexthorpe



# Wheelie Bin Watch Launched in Doncaster

South Yorkshire Fire and Rescue and its partners have launched a groundbreaking new initiative to reduce wheelie bin fires in Doncaster.

Wheelie Bin Watch was launched in October for residents from Dell Crescent and Bramworth Road in the Hexthorpe area. The initiative is designed to further build community relations by asking neighbours to bring other people's wheelie bins in if they are at work or on holiday. This will reduce antisocial behaviour and help to make the environment safer.

Neil Martin, Arson Intervention Officer from South Yorkshire Fire and Rescue explained: "The risk of wheelie bins being set alight is one that exists across the County and nationally, but there are many ways that we can all help to reduce the problem. We encourage people to bring their bins

out on the day of collection and put them away again as soon as possible, but we know that sometimes this can be difficult. Wheelie Bin Watch encourages people to take pride in their community and help each other to make it safer".

New Deal for Communities, Doncaster Council, South Yorkshire Fire and Rescue and the safer neighbourhood team played their part in establishing the scheme.

The safer neighbourhood team carried out door to door visits in the two streets and gave out letters explaining the scheme. South Yorkshire Fire and Rescue assisted with the fire educational letter delivery helping to distribute letters to over 5,000 homes. They also funded posters and stickers for residents to raise awareness of Wheelie Bin Watch.

## ***SSS Removal Service***

***Supplies – cheap  
Special – cheaper  
Service – cheapest***

*No job too small*

*Very cheap and reliable*

*Anytime, Anywhere*

*Also Rubbish Clearances*

**07956 867272 / 01302**

**364960**

***Free Estimates***

## STARBUYS

31 Hexthorpe Road

*We stock:*

**Hair Dye – Make Up – Toilet Rolls  
Pest Control Items – Shampoo  
Cleaning Materials – Nappies  
Gift Sets etc.**

***All Top Brands at Low Prices***

**Open: Monday to Friday 8 a.m. – 4.30 p.m.**

*Free delivery on Orders  
over £10*

**01302 730313**

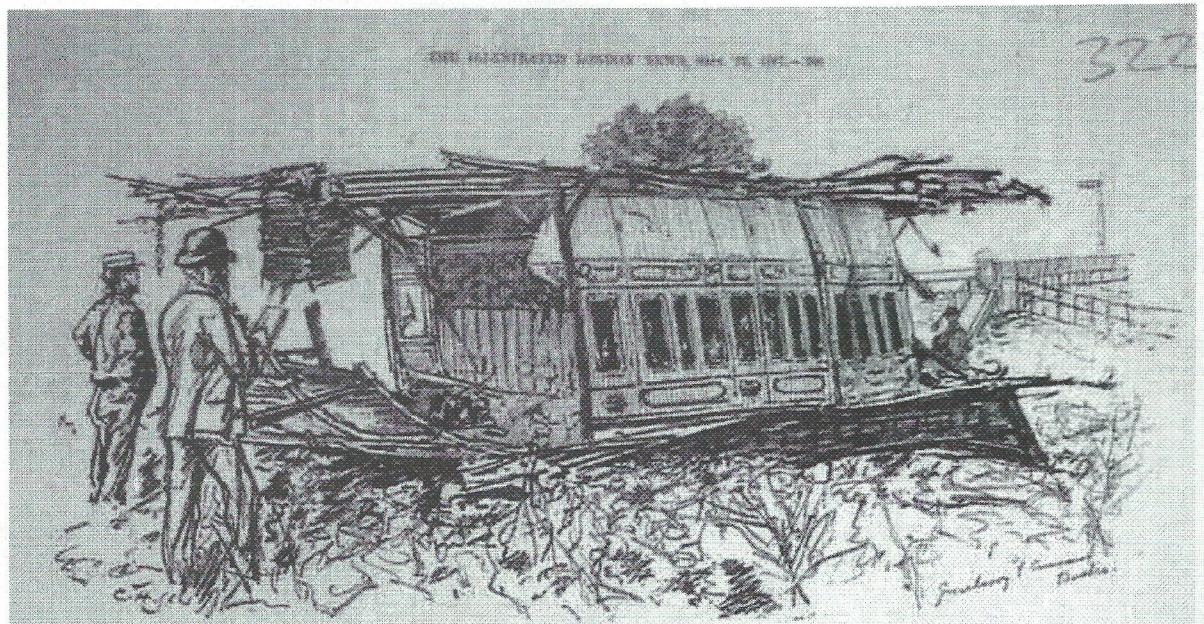


# HEXTHORPE TRAIN CRASH 1887

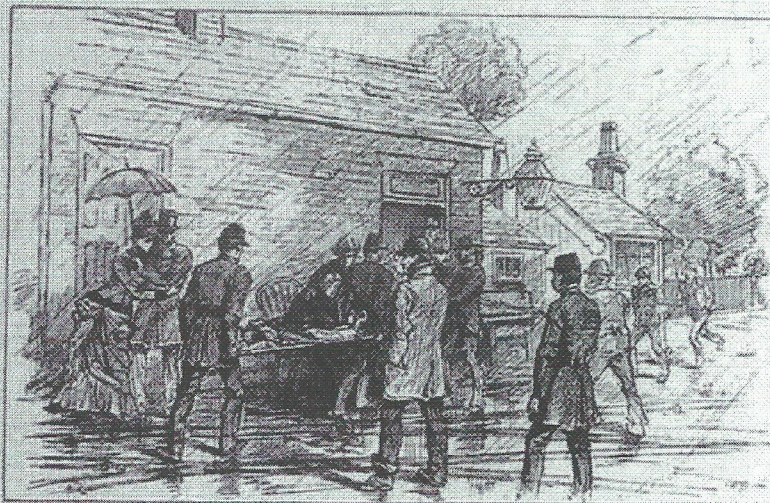
In our December issue of 2004 we published a picture showing the terrible train crash that occurred at Hexthorpe Flatts. Twenty five people were killed. On 16<sup>th</sup> September 1887 two trains collided. A Liverpool to Hull express train crashed into the back of another train standing at the platform at

Hexthorpe Station, carrying racegoers to the St Leger meeting at Doncaster. The stationary train was standing at the platform of Hexthorpe Station that was only used on race days. A reader has sent us further pictures of this tragic accident. They were first published in the London Illustrated News.

The first two pictures show scenes of the accident; the portrait is of a surgeon who attended many of the injured. The final picture covers the whole scene. The Greenfield Lane bridge can be seen and also a cottage on the left. Many readers will remember that that from their days visiting the Flatts.



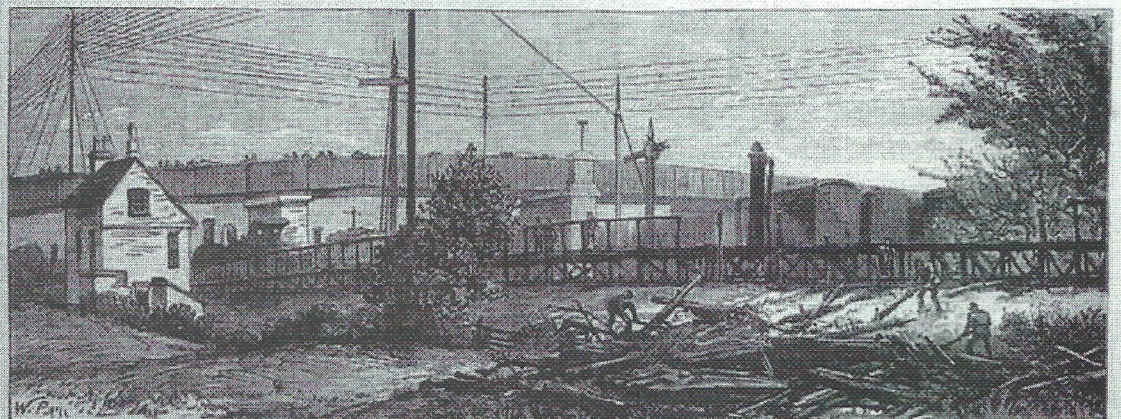
VIEW OF THE DAMAGED CARRIAGE.



BRINGING THE DEAD TO THE GENERAL BURIAL.



MR. F. PEART  
Surgeon Surgeon of the Volunteer Infantry, who administered  
aid to the injured at the scene.



GENERAL VIEW OF THE SCENE OF THE ACCIDENT.  
THE RAILWAY DISASTER AT HEXTHORPE, NEAR DONCASTER.



# News in Brief

## A Visitor from Uganda

William Lubwama from Kampala, Uganda, is working in Hexthorpe for a year. He has taken time out to act as a care force worker, engaged by the Hexthorpe Methodist Church. He is working with the children's clubs, in the Junction, at the luncheon club and also spends some time in the Hexthorpe school. He visits those who find it hard to get out. He has been taken aback at the number of people who are over fifty, let alone sixty, seventy, eighty or ninety! The average age of life expectancy in Uganda is well below fifty. The thing he is looking forward to the most is seeing some snow. He has already experienced a cultural shock by watching Doncaster Rovers!

## Hexthorpe House

It was announced at a meeting of the leaders of community organisations that the Doncaster New Deal for Communities is to make an offer for the Hexthorpe House. This building has been an eyesore for some time now. Steve Szostak, the Chief Executive of NDC, said, 'If it is the wish of the community we shall attempt to buy it and probably demolish the building. We shall consult with local people how best the site then can be used for the greater benefit of Hexthorpe residents.'

## The Bombardier Site

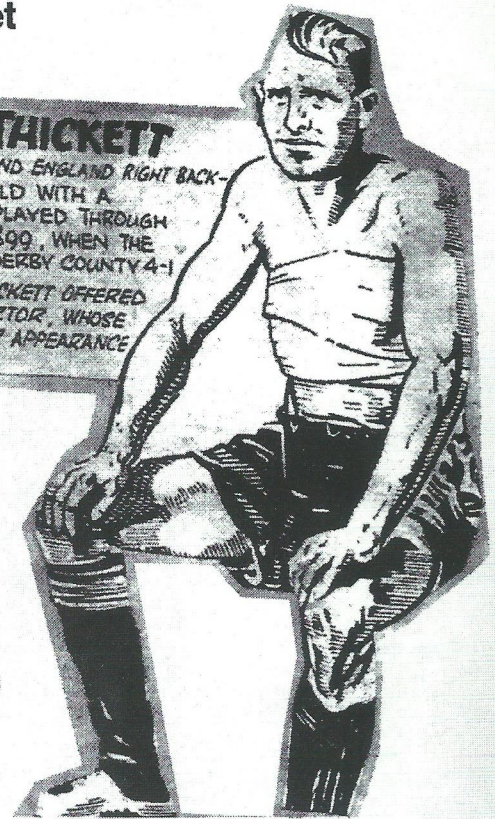
The old plant works site is now well on the way in the preparation work needed for the land to be ready to build houses. The land is being capped because of the presence of asbestos. For the past few months barges, containing large boulders from the quarries up at Levitt Hagg, have been daily coming down the river to the site. It is hard to remember what the works looked like. The house building may be set back because of the present economic climate

The Eden Grove sports ground has also been utterly flattened. A large bowl has been created where we understand football pitches are to be

placed. At the Old Hexthorpe end, close to the road and some houses, a small lake has been created where water has gathered. This is of some concern to local people. They see the danger to children and also wonder what will happen in times of flooding.

## Harry Thicket

**HARRY THICKETT**  
— SHEFFIELD UNITED AND ENGLAND RIGHT BACK —  
WENT ON TO THE FIELD WITH A  
BROKEN RIB AND PLAYED THROUGH  
THE CUP FINAL OF 1899, WHEN THE  
UNITED DEFEATED DERBY COUNTY 4-1  
AFTER THE MATCH THICKETT OFFERED  
HIS MEDAL TO THE DOCTOR, WHOSE  
BANDAGING MADE HIS APPEARANCE  
POSSIBLE



Some years ago we had an article about Harry Thickett from the Prior Well Inn, which was situated on Urban Road. He played for Sheffield

United at the turn of the nineteenth and twentieth century. It created an interesting correspondence. A reader created his own personal football scrapbook in the 1940s. In it is the fascinating extract above concerning Harry Thickett.

## Hexthorpe Bridge

At long last the strengthening of Hexthorpe Bridge seems to have come to an end. Delays have been necessary, but they have certainly not made Hexthorpe seem very welcoming. A resident has said to us that now is the time to smarten up the approach into Hexthorpe. He even suggested that perhaps we could have more descriptive, attractive Hexthorpe signs on both the bridges over the railway. Some villages



have familiar features pictured on their signs. What about one or two of the famous railway engines built here? Any ideas?

### **The School's Harvest Tea**

Stacks of fruit, vegetables and other produce piled high as lines of invited guests filed in for this year's Harvest Tea. The guests were given a warm welcome from Mrs Lawson, followed by songs from the junior choir. Year 6 children sang a selection of harvest-themed songs and songs from around the world.

The diverse talents of Year 6 pupils were displayed with Alex Blake and Adam Garland on their guitars, Sophie Whitnall and Kit Renton on the recorder, and Emma Parkin accompanying Mrs Milner's piano with her clarinet. Hardeep Singh performed superbly on his African drum. Year 6's animations based around the artist Archimboldo's 'fruit and vegetable faces' proved a very popular addition to the line-up.

The afternoon was rounded off in style, with tea, sandwiches and cakes, followed by the excitement of a raffle and a few games of bingo.

Judging by the many letters of thanks that arrived from the delighted guests, it seems that everyone agrees that this was one of the best Harvest Teas for many years.

### **STOP PRESS: HEXTHORPE VICAR IS LEAVING.**

It was announced in St Jude's Church on Sunday 9<sup>th</sup> November, as this issue was being completed, that Father John Gilbert is leaving his position as Vicar of Hexthorpe. He will be departing in February of next year. He is moving to Barnstaple in Devon. Father John has been vicar here for some twelve and a half years. We hope in our next issue to report further, with an appreciation of his contribution to the life of the Hexthorpe community.

### **Credit Union**

A branch of the Doncaster Credit Union is to open in Hexthorpe in the new year. This will be located at the Junction. Details will be available soon. This will be an important development for many local people.

## **New Hexthorpe Post Office**

*We would like to wish all our  
customers a very Happy  
Christmas and a prosperous  
New Year*

*From Yusaf and Amina and  
staff*

### ***New services available:***

- You can buy Euros here
- You can transfer money to anywhere in the world by

## **BSc Plumbing + Heating**

*Corgi Registered 227768*

**Boilers, Fires, Cookers  
Installation and Servicing  
Bathrooms  
Radiators**

**All Plumbing Work Undertaken**

**Tel: 01302 343232  
Mobile: 07837 032 784**