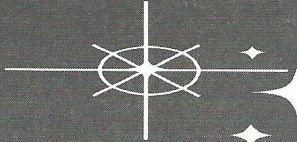


The HEX-PRESS

YOUR FREE HEXTHORPE COMMUNITY NEWSPAPER No 33/ Dec '94/Jan '95

In the bleak mid-winter



In the bleak mid-winter
Frosty wind may moan
Earth stood hard as iron
Water like a stone
Snow had fallen on snow
Snow on snow
In the bleak mid-winter
Long Ago
Our God heav'n cannot hold
him
Nor earth sustain
Heav'n and earth shall flee
away
When he comes to reign
In the bleak mid-winter
A stable-place sufficed
The Lord God Almighty
Jesus Christ

Photographs supplied by
Mr & Mrs Bennett, The
Manor House, Hexthorpe

WEEKLY EVENTS

Methodist Church Hall

S.A.R.A. Group
(Stay and Rest Awhile)
Mums and Tots Group
Thursday 9.00 - 11.00

Girls Brigade

Tuesdays 6 - 8.30 pm
5 to 8 years, meet at 6 pm
8 to 11 years, meet at 6 pm
11+ years, meet at 7.15 pm

Boys Brigade

Wednesdays 5.15 - 9.15 pm
5 to 8 years, meet at 5.15 pm
8 to 11 years, meet at 6 pm
11 to 16 years, meet at 7.45 pm

You are invited on any Sunday
to the Worship Services
at Hexthorpe Methodist Church
10.30am & 6.00pm

Hexthorpe Environmental Group

Last Thursday of the month
at 7 pm

At St Jude's Church Hall

Playgroup

Mondays 9.15 - 11.15am
Wednesday 1.15 pm

Tai Kwando

Monday 7.30 - 8.30
Tuesday 7.00 - 9.15
Thursday 7.00 - 9.15

Fitness 2,000

Wednesday 7.30 - 8.30

WHO'S WHO

Local Councillors

GORDON JONES
7 South Street
Tel: 367396

CHARLES HARRISON
81 Florence Avenue
Tel: 858542

TONY PRATT
21 Mansfield Road
Tel: 360685

METHODIST MINISTER

Ian Bell
1 Cedar Road, Balby
Tel: 852024

METHODIST LAY WORKERS

Mr. Andy Ross
61 Hexthorpe Road
Tel: 349341

Peter Gilson
21 Bentley Avenue
Tel: 768417

PARISH PRIEST

The Rev. M.H. James
The Vicarage
132 Shadyside
Tel: 852057

HEXTHORPE COMMUNITY CONSTABLE

contact P. C. RIMMER
Tel: 366744

New Books in Balby Library

Avril CAVELL: Yellow silk robe

"A priest's wife moves from the country to East London - what a contrast."

Alexandra CONNOR: Winter Women, Midsummer Men

"Imogen has everything but when life beings to fall apart she will find happiness - at any cost . . ."

Andrew M. GREELEY: Happy are the Peacemakers

"Was the bomb planted by the millionaire's wife?"

Jack HIGGINS: Sherba

"Latest best seller"

P.D.JAMES: Original sin

"Latest best seller"

Alison LOWRY: Natural Rhythm

"A tough tale of female friends"

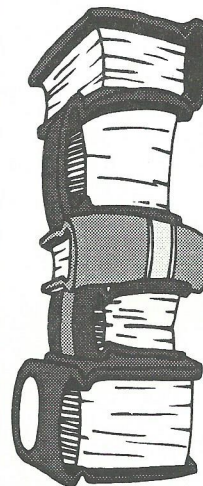
Leslie THOMAS: Running away

"Latest best seller"

Handy Hint

Recycle your left over
Christmas Puddings by
pressing it into a smaller bowl,
whilst still warm, to make a
new pudding !

MOBILE LIBRARY



Please note - the library service informs us that the mobile library will not operate on the 26th and 27th of December and on the 2nd and 3rd of January.

December 5th	Week 2
December 12th	Week 1
December 19th	Week 2
December 26th	Week 1
January 2nd	Week 2
January 9th	Week 1
January 16th	Week 2
January 23rd	Week 1
January 30th	Week 2

New Vicar Arrives

You may have already seen the new vicar of Hexthorpe, as he acquaints himself with the area. The Rev. Martyn Howard James arrived in the last week of November, but officially begins on December 13th. It was his induction and collation service on that day. Mr James was born in South Wales. He became a student at Bristol University where he studied medicine. After leaving university he became a surgeon and for 15 years was at the Children's Hospital in Bristol. Then came a new direction. Mr James entered the Community of the Resurrection at Mirfield. After his time there he became curate at St. Martin's, Torquay, where he remained for five years. He then returned for a year as a novice to Mirfield. Another year was spent at St. Cecelia's, Parson Cross, Sheffield when the Bishop of Sheffield asked him to come to St. Jude's, Hexthorpe. Mr James says that one of his first tasks is to consolidate the work at St. Jude's and that he sees the church being there for the community.

Councillor's Column

In answer to people's questions we have asked Councillor Charles Harrison to explain what is happening at the clock site and the Shadyside Lodge site.

Plans are underway to develop services in Hexthorpe for elderly people and people with learning disabilities in Doncaster.

Work has started on creating a Day Centre for elderly people at Hexthorpe. The centre will be on Urban Road and will be completed in early February and will cater for 20 people. It will be open for seven days a week and will provide evening as well as day care.

The centre's facilities will also be available for other groups involved in the care of the elderly to use as a meeting place. It is anticipated that the day centre will be run by Age Concern on behalf of Social Services through Community Care funding which has to be spent within the independent sector.

Social Services chiefs in the borough have also joined forces with Doncaster Health Authority to redevelop the site of the former elderly persons' home at Shadyside Lodge, Hexthorpe

The scheme involves the building of an eight place bungalow, a 12 place respite hostel and a resource/day centre, all for people with learning disabilities.

Building work on the project will start in the near future and is scheduled to be completed in the spring of 1995.

These projects will bring major investment into Hexthorpe and provide a range of highly valuable services for the people of Doncaster.

Charles Harrison

N BROOKES and SON

Urban Garage
Hexthorpe, Doncaster

SUPPLIERS OF
QUALITY USED CARS
and LIGHT VANS

* Service and Mechanical Repairs *
* Insurance Accident /
Body Repairs *



Tel : Doncaster 853785

It often seems that the world
does not value its children.

Unprotected, they are the first to suffer from
poverty, disease, hunger, abuse, war.
Yet the value of each child cannot be measured.
Each one can bring great joy.

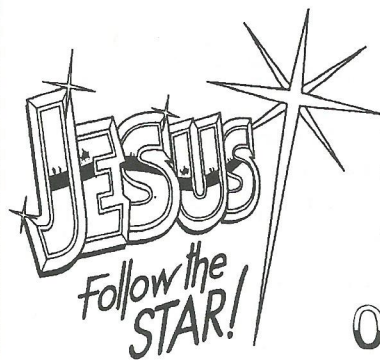
JOY
TO THE WORLD

Tear Fund places great emphasis on projects that
work with children.



This Christmas, on Christmas Eve,
carol singers from the Methodist
Church will be collecting for Tear
Fund. Your prayers and gifts can
help bring joy to children around
the world.

TEAR FUND
CHRISTIAN CONCERN IN A WORLD OF NEED



**Hexthorpe Methodist
Church**
Urban Road

**EXPERIENCE
THE POWER
OF CHRISTMAS**

We invite you to

Friday 16th 7.00 p.m.

A CHRISTMAS CELEBRATION

Different church groups, young and old to entertain
you so sit back and enjoy.

Followed by Coffee/Tea and Mincepies

Sunday 18th 10.30 a.m.

ALL AGE WORSHIP

Something for everyone
Led by Rev Ian Bell

Sunday 18th 6.00 p.m.

CAROL SERVICE

Carols and Christmas readings
A real favourite by all
followed by Coffee/Tea and Mincepies

Saturday 24th Christmas Eve

CAROLS AROUND HEXTHORPE

(Leaving the church at 7.00 p.m.)

Saturday 24th 11.15 p.m.

CHRISTMAS EVE COMMUNION SERVICE

Led by Rev Ian Bell
AT ALDER GROVE METHODIST CHURCH

Sunday 25th 11.00 a.m.

CHRISTMAS DAY SERVICE

Only 45 minutes long so stick the
turkey in beforehand
Led by Rev Ian Bell

Sunday 1st January 1995 10.30 a.m.

COVENANT SERVICE

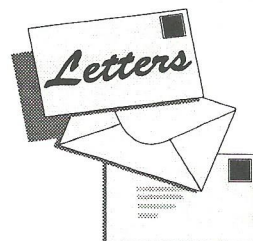
Come and celebrate the New Year in together.
Led by Rev Ian Bell

Sunday 1st 6.00 p.m.

EVENING SERVICE

Led by Rod Potter
For further information: 0302 768417

LETTERS



Dear Editor

I was full of anxiety about wheelie bins. Could I manage it when it was full? Would a full bin go down a big step at my back door? Now all worries are proved nonsense. Easy to rock back on its wheels - easy to drop down the step - a doddle to pull it back up again empty. Thank you to whoever!

Satisfied.

Tae Kwon-Do

IAN ANGUS

Monday - Adult Beginners - 7pm- 8pm

Starting October 11th 1993

Feel unsure? - Just come and watch!

or phone Ian. Tel: 761775

Monday 7.30 pm.

Tuesday 6.45 pm.

Thursday 6.45 pm.

**In St. Judes Church Hall
Hexthorpe.**

Ian Angus is Recognised by the SPORTS
COUNCIL and fully qualified as a MARTIAL
ARTS INSTRUCTOR.

CO-OPERATIVE

FUNERAL SERVICES

**PEACE OF MIND
DAY AND NIGHT
GUARANTEED PRICE FUNERAL BOND
AND PRE-PAYMENT PLAN AVAILABLE**

DONCASTER

342801

89/90 Spring Gardens,
Doncaster

ROSSINGTON

867902

Edward Street
off King Street, Rossington

OR
PHONE **0800 18 18 18** YOUR CALL
IS FREE

Floral tributes • Monumental masonry



CRS LTD



LOCAL NEWS AND PEOPLE



Success for the First School

The pupils of our First School are flying high. In a recent competition run by the Doncaster Star the school was awarded a prize. The prize was a parachute donated by RAF Finningley. Parents can relax; we won't be seeing children floating down from the sky landing in the playground. The parachute will be used for projects within the school.

Telling Tales at the Middle School

Pupils at the Hexthorpe Middle School have been learning the art of telling tales. There is no need to fear because story-telling is part of the National Curriculum. Year 6 had a visit from Mr. Roop Singh, who told traditional stories of the Sikhs. Mr. Singh is an educational outreach worker; he is employed by the Sikh Educational Advisory Services. He says that he wants to develop cultural awareness in schools and organisations. "I want to build cultural awareness for a better society."

V.I.P. Treatment

Year 6 of the Middle School study a technology topic in the National Curriculum. To help the children with their studies a pack called 'Fast Track' was presented to the school by the British Rail Mechanical Department. Some of the children visited the Plant Works and are seen in the photograph.

Hexthorpe Middle School children receiving the VIP treatment and presentation of "Fast Track" from British Rail Mechanical Engineering Department at Crimpsall.

New Church Worker Arrives

Mr. Peter Gilson and his wife Stephanie have come to live in Bentley Avenue. Peter is employed part-time by Hexthorpe Methodist Church as a lay-worker.

Peter and Stephanie have come to Hexthorpe from Penn, Wolverhampton. That is Stephanie's home town; Peter originally comes from Drayton in Leicestershire. Both have spent three years at Moorlands Bible College. Stephanie has been working as a secretary and Peter as a woodwork machinist. Make yourself known to them if you see Peter and Stephanie around the area.

Hexthorpe Children Star

A group of children from the First School formed an editorial board to produce a page of the Doncaster Star. They interviewed former pupils and then helped to select the material for the School Report, which was featured in the Star on Wednesday 23rd November. They were also invited to visit the newspaper offices to see how the Star was produced and printed. Congratulations to the editorial board - the School Report was excellent.

PLUMBING HEATING SERVICE

24 HOUR EMERGENCY CALL OUT



**INSURANCE WORK
UNDERTAKEN**

**NO CALL OUT CHARGE
ALL TYPES OF HEATING AND PLUMBING
WORK EXPERTLY UNDERTAKEN
NO JOB TOO SMALL FOR VINCE HORSEMAN**

Burst pipes copper, lead
Cylinders
Bathroom suites
Add on radiators
Showers
Auto Washers
Dishwashers
Tank changes

Boiler changes
Combinations fitted
Sinks
Bidet
Toilets
Leaking taps
Up date on system
Services on appliances

FOR FREE QUOTE AND ADVICE CALL

0302 321930 - 0850 051228

68 STONE CLOSE AVENUE, HEXTHORPE, DONCASTER

It's a Pets Life

By Gerald Coley



ON A COLD AND FROSTY MORNING!

Although we don't seem to get such bad winters nowadays, it is worth remembering that at the moment we could be going through the coldest and bleakest part of the year. The onset of really frosty nights and freezing days means that we should be taking extra care of our pets - especially those that live outside.

The contents of water bottles can freeze and should be checked regularly. (A handy tip is to put a teaspoon of glycerin into each bottle. It won't harm your pet and the water won't freeze.)

Hutches should be protected throughout the winter from driving rain or snow. The best way to do this is to fit a 'hook-on' piece of boarding over the mesh section. It is not a bad idea to move hutches into a shed, outhouse or garage if this is possible should we encounter really severe weather. (If in a garage make sure there is no danger from exhaust fumes from the car.)

External aviary flights should also be protected. Specially made panels, using any of the clear plastic materials that are easily available, protects whilst at the same time lets in all of the necessary light.

Inside a shed or out in the garden or back yard, small animals should be given extra bedding for both warmth and security. Do not be tempted to use the stuff that looks like cotton wool (even if to our eyes it does look very cosy and warm) as this can harm some creatures. If it is ingested it can build up in the intestine and cause a fatal blockage. It can also cause acute constipation, internal irritation and damage to vital organs - all of which could bring about a long, drawn-out and very painful death.

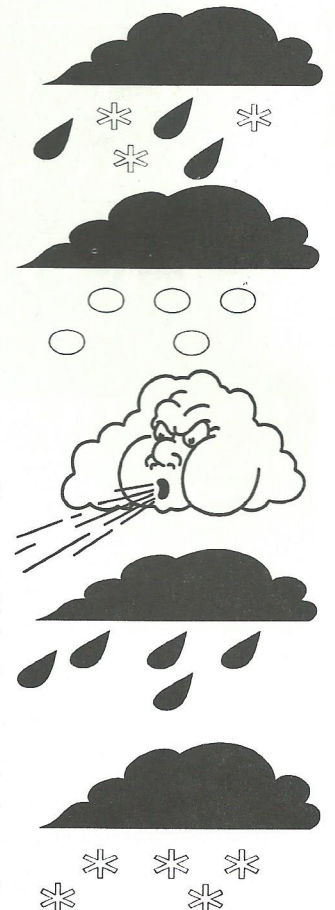
The best small animal bedding is torn up, good quality, soft, toilet paper! It is also a lot cheaper than anything you can buy from a pet shop.

For rabbits and guinea pigs make sure that they have plenty of good, clean hay for their bedding.

As a special treat give your outside pets a warm meal now and again - especially on extra cold days!

Keep them comfortable and warm in winter . . . and they will emerge - full of the joys - in spring!

* If you have a specific non-medical query about your pet (or would just like to tell us about him) Gerald would be interested to hear from you. Just phone our Pet Helpline on 857104 anytime.



MAKE YOUR DAY SPECIAL WITH *a-la-Carte Cakes*

Weddings, Birthdays, Anniversaries. Select your special cake for any occasion. All cakes complete with sugar decorations.

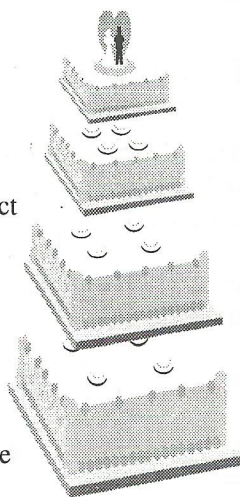
Sponges from £23.00

Rich Fruit from £28.00

Wedding from £85.00 (2 tier)

For appointment to browse at your leisure and choose your special cake, in the comfort of your own home.

Call Christine on 0302 859075



own cakes iced on request



OPENING HOURS

	LUNCH	TEA	SUPPER
Tues	11.45 to 1.45pm	4.30 to 6.00pm	
Wed	11.45 to 1.45pm		
Thurs	11.45 to 1.45pm	4.30 to 6.00pm	8.30 to 11.30pm
Fri	11.45 to 1.45pm	4.30 to 6.00pm	8.30 to 11.30pm
Sat	11.45 to 1.45pm		
Sun			8.30 to 11.30pm

PHONE FOR ORDERS : Brian & Margaret 856843

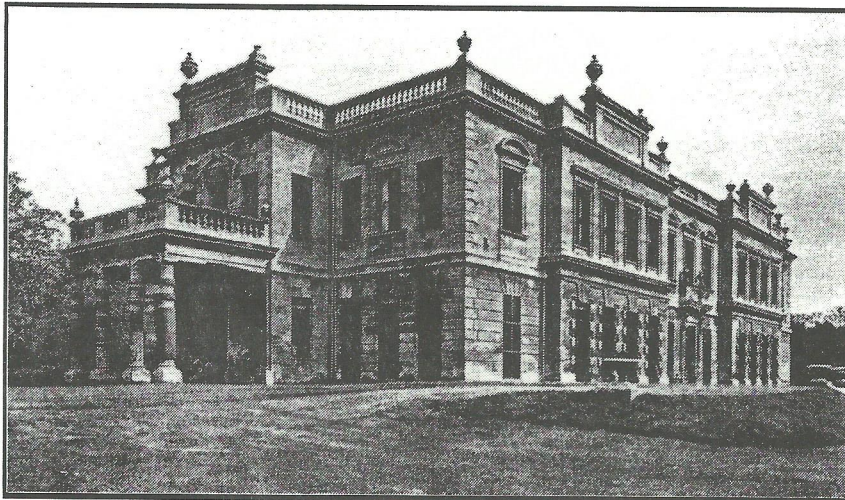
A Christmas Outing

Brodsworth Hall - 'A Time Capsule'

A reader has sent us information about Brodsworth Hall. Although it is not yet open, perhaps when you want a ride round during the holidays you can pass by Brodsworth. He writes -

When Brodsworth Hall, and its grounds were offered to the nation in 1989, there was considerable excitement in English Heritage. This was because it was found that the elegant contents and decorations were practically unchanged since the mid-Victorian age when the building was constructed. Even the kitchens and pantries contained all their original equipment. It has been described as "the most complete example of a Victorian country house in England."

The National Heritage Memorial Fund donated £3.3 million to secure the contents and to carry out



necessary work on the building and to conserve 'the time capsule'. Repairs to the furnishings and contents are being kept to a minimum with the aim that once restoration is complete the old atmosphere of the rooms will remain.

The building itself has received

considerable attention with extensive repairs to the roof and to replacing stonework. Work has also been carried out in the 17 acre grounds and gardens.

Work is now well advanced and an opening date for public admission to both house and gardens fixed for 6th July 1995. English Heritage expect Brodsworth Hall to become one of the country's biggest attractions amongst country houses. Information on membership of English Heritage may be obtained at the Doncaster Central Library, Waterdale.

Impossible Pie - it really was!

This recipe was in our last edition. Several readers complained that it was impossible.

They were right. We left out a vital ingredient - the flour. So we repeat the 'correct' recipe this time. However, it is good to know that readers actually use the recipes. Good cooking and eating.

- 4 eggs
- 1/4 cup margarine
- 1 cup sugar
- 1/2 cup flour
- 1/4 teaspoon salt
- 1/2 teaspoon baking powder
- 2 cups milk
- 1 cup coconut
- 1 teaspoon vanilla

Place all the ingredients in a bowl or blender and mix together. Pour into 10" buttered pie dish. Bake in a 350o F or Gas mark 4 oven for 1 hour. When done, 'crust' will be on the bottom, custard in the middle and coconut on top. [1 cup = 8 fluid ounces, but any size will do providing the same one is used throughout.]

Are you getting married in 1995 ?

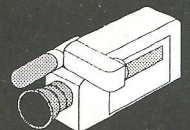
Let us record the **BIG DAY** VIDEO



Marriages, Christenings etc

**PROMOTE YOUR
BUSINESS on VIDEO**

- * Training * Commercial
- * Promotion * Demonstration



SPECTRUM VIDEO

**CONTACT STEVE on
(01302) 361037**

Hexthorpe before the opening of the Plant Works in 1853

Hexthorpe before the opening of the Plant Works was a rural area which was then mostly outside the Borough of Doncaster. In 1837 it was described as a quiet and salubrious place with gardens. The Crimpsall alongside Hexthorpe was 149 acres of rich meadowland which was partly owned by the freeholders of Hexthorpe with Balby. After the hay had been mown, the freeholders could keep their cattle there from September to March.

The ordnance survey map of 1854 shows the layout of Hexthorpe as we would all recognise it today. Urban Road was then known as Hexthorpe Lane and Shady Side was a footpath. What eventually became Old Hexthorpe and Bramworth Road is clearly marked. The map also locates a ferry which crossed the River Don to Newton. I remember crossing the river on the ferry in the 1950's so it was in being for at least a century.

In 1803 Hexthorpe contained only about half a dozen cottages. The Manor House and Hexthorpe House (not the pub) were built in the early years of the nineteenth century. The Manor House was occupied by the first incumbent of St. John's Church after 1847 and he had a large household with several servants. It wasn't until the 1890's that the Woodhouse family moved into it.

Hexthorpe House was situated facing the river around the Bramworth Road area. It was occupied in 1851 by a retired naval captain - Captain Ramsden who also had a large household including a groom, lady's maid and cook.

By the 1840s there were about twenty five other families in Hexthorpe of which most were farm workers except for the occupants of the Rising Sun Beerhouse. The Rising Sun was said to be due for demolition in 1853. I think it has been rebuilt twice since then.

The only other building was the workhouse which opened in 1840. It seems to have had between 150 and 200 inmates with their own school and infirmary. It occupied the area that is now the R.F.S. car park.

The railway company acquired some of the Crimpsall in order to build the Plant workshops. The freeholders were paid £1,706.3s.10p compensation for their loss. All that money was given, cheerfully we are told, to help establish the new cemetery at Hyde Park.

If anyone is interested I have all the references for the information contained in this article

This article has been sent to us by Valerie Bell (nee Croskell) who formerly lived in Hexthorpe.

Hexpress Comment

Charles Harrison, one of our local councillors, arranged for the Hexpress to visit a Respite Hostel for people with learning disabilities at Wickett Hern Road, Armthorpe. It was very impressive. Guests spend upto 6 weeks a year there. They are usually cared for at home by their parents; the hostel gives the carers a much needed rest and it gives the guests a learning experience of living in a community.

The facilities are first class; there are 8 bedrooms, a lounge, garden and T.V., stereo etc. Guests visit day-centres during the day and come home in the evenings. There is a very happy atmosphere in the home, the staff are obviously dedicated - it is more than just a job for them. There are strong links with the local community. There are hundreds of families in Doncaster who need such a facility. We can look forward to a similar home being built on the Shadyside Lodge site. We are sure that Hexthorpe people will welcome and support such a home in our community.

Any letters, articles contact :

DONALD

(31 Old Hexthorpe, Tel : 852521)

Adverts, contact :

JULIE

(165 Urban Road, Tel : 854898)

Published by :

**HEXTHORPE METHODIST
CHURCH**

Printed & Designed by

GNBA DESIGN & PRINT

**BAWTRY HALL, BAWTRY
TEL : 0302 710576**