

The HEX-PRESS

Your free Hexthorpe Community Newspaper

Let's support our own Hexthorpe Road shops which give us such friendly efficient service.....on our doorstep!

Tel: 730227 for
an appointment

Adoré

NOW OPEN AT 91 HEXTHORPE ROAD, HEXTHORPE, DONCASTER

Jenny and Staff open two months welcome both old and new customers. Our prices are **COMPETITIVE** and our **TEA and COFFEE** are **FREE**.

Our Hair Salon is **SPACIOUS** and **COMFORTABLE**. The staff are friendly and seek to please.

SENIOR CITIZENS ← PLEASE
 CALL
 IN

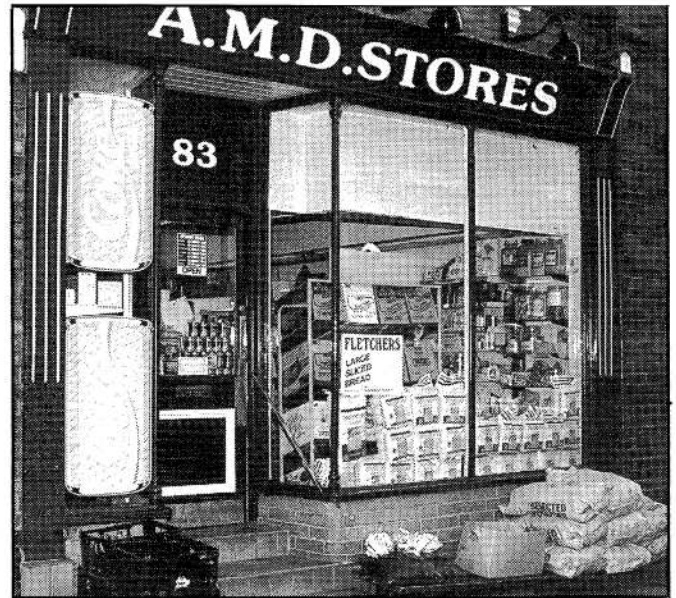
Try us once we think you will be a friend for life.

SPECIAL OFFER

Have a perm .. and a free colour of your choice

£3-50 for shampoo and set
AND NO EXTRAS

Adore is looking for a hair stylist - creative - with up to date Salon experience. Give Jenny a call if you feel you "fit the bill".



A.M.D. STORES

83 HEXTHORPE ROAD
TEL: 327669

Bacon and Ham	Milk and Eggs
FRUIT AND VEG.	COOKED MEATS
FRESH MEAT	NON FOODS
FROZEN FOODS	CANNED FOODS
Cakes and Sweets	Salad and Cigarettes

5 FRIDGES AND FREEZERS
Fresh Bread daily
Helpful and friendly staff

There's ALWAYS a BARGAIN IN STORE



WEEKLY EVENTS

At Methodist Church Hall
S.A.R.A. Group
(Stay and Rest Awhile)
Mums and tots Group
Thursday 10.15 - 12 noon

Girls Brigade
Tuesdays 6 - 8.30 pm
5 to 8 years, meet at 6 pm
8 to 11 years, meet at 6 pm
11+ years, meet at 7.15 pm

Boys Brigade
Wednesdays 5.15 - 9.15 pm
5 to 8 years, meet at 5.15 pm
8 to 11 years, meet at 6 pm
11 to 16 years, meet at 7.45 pm

Ladies Keep Fit
Thursdays at 7 pm

Middlers Club
Friday from 6 to 7 pm
Ages 9 to 13
Middle School children
welcome

At St. Judes Church Hall
Playgroup
Mondays 1.15 pm
Wednesday 1.15 pm

Tai Kwando
Tuesday 6.30 - 9.30 pm
Thursday 6.30 - 9.30 pm

Aerobics
Wed. 2 sessions
5.45 - 7.00 pm

Local Councillors

TONY HEMSLEY
39 Crimpsall Road
Tel: 342592
GEORGE BRUMWELL
16 Laneham Close
Tel: 535725
GORDON JONES
7 South Street
Tel: 367396

WHO'S WHO

PARISH PRIEST
Fr. N. D. SENNITT
132 Shadyside
Hexthorpe
Tel: 852057
Hexthorpe Community
Constable
contact P.C. RIMMER
Tel: 366744

METHODIST MINISTER
Ian Bell
1 Cedar Road, Balby
Tel: 852024

METHODIST LAY WORKER
Mr. Darren Stott
113 Old Hexthorpe
Hexthorpe
Tel: 857128

OTHER EVENTS

Feb 15th - Saturday 7.00 to 11.00
at Methodist Church Hall, Urban
Road. The 'oh so popular' BARN
DANCE.
Band GALOPEDE
Tickets £2 inc. refreshments
from Joan Cragg Tel: 852840

March 28th - Saturday afternoon -
a drama group from Barnsley
called MUSTARD SEED is
holding a 'workshop' with an
evening performance. Interested?
Contact Darren Stott Tel: 857128

SPECIALLY FOR MEN
Feb 21st. - Birthday Celebrations.
March 27th - Rod's Choice

CENTRAL WARD
Feb 15th Councillors' Advice
Meeting
Saturday 10.00 to 12 noon
Hexthorpe Youth Centre
Shadyside

"FIRST WEDNESDAY"
Luncheon Club - Feb. 5th



In Methodist Church Hall at 12.45pm
Cost £1.50p Doors open 12.20pm
Next months Luncheon - March 4th

CONGRATULATIONS

To Mr. George Lunn, who
celebrated his 103rd birthday at
Shadyside Lodge on Dec 18th. It
is hoped that Mr. Lunn may allow
Hexpress to interview him for a
future edition.

APOLOGIES

To Mr. Croskell for spelling your
name incorrectly in the article
about your retirement.
We also noticed Dot Ardron had a
'Rally' memory of an unpleasant
nature. Really Dot, - we're sorry.

Dear Editor,

For several years there was a
Christmas tree opposite the 'Rising
Sun', and I understand that it was
one of the few in Doncaster that
was NOT vandalised.

If the council are not able to
provide a tree what about the
Community providing one?.

This year's Christmas was
marked by traditional carols being
sung in the streets. On the
Wednesday before Christmas, St.
Jude's were singing, and on
Christmas Eve both at lunch time
and in the evening, the Methodists
were around the area.

Why not make Christmas
next year really special?

Are some lights out of the
question?

Your sincerely,

D.G.R.

name and address supplied

Would You Believe It?

"My wife said, 'look, there's a deer on the lawn'."

" A sparrowhawk comes and sits outside our window."

" We regularly see a woodpecker in the trees."

Where is this nature paradise ? Somewhere in the Dales? In the leafy suburbs of the South? NO - it is right here in Hexthorpe.

I have been constantly amazed at the variety of wild-life which has been reported. People would not immediately associate Hexthorpe with nature - but it is ideally situated. The river serves as a boundary and beyond that is open countryside. We have the Crimpsall Ings, the Bell Pond just over the river, the Flatts riverbank, and the nature reserves of Sprotborough and Cadeby, which are not far away.

Gardeners in the allotments regularly see swans and ducks flying in groups, with their long necks stretched out and their wings beating rapidly. Presumably they are flying from one of the local watering places to another. Herons have been seen on the river bank, or in trees nearby.

The gardens of the houses adjoining the river attract a variety of wild-life. A deer (a fallow deer?) was seen on a lawn there; it is thought it had come across the river, and it disappeared into the back of the Dell.

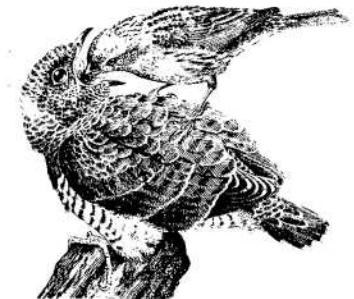
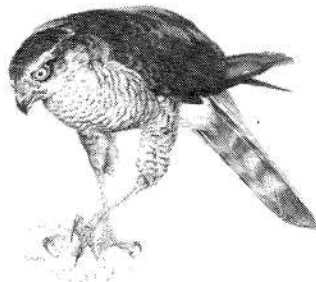
Where had it come from?

Where did it go to?

Kestrels have become a common sight in recent years, particularly living off the wild-life near to motorways. Sparrowhawks are perhaps less common. They feed off smaller birds like sparrows or tits. Again, one has been seen regularly in a garden close to the river.

The Woodpecker, probably the great spotted woodpecker, was sighted in the same garden.

A tawny owl flew down Urban Road late one evening last



COP SPOT

P.C. Rimmer our Community Constable

House burglaries still give cause for concern with T.V.s, video recorders, cash and jewellery being the main items on the burglar's shopping list.

Remember burglars will operate both during the daytime and at night (especially now the nights have drawn in) so, be vigilant at ALL TIMES.

Most houses are entered from the rear, usually by forcing a rear ground-floor window or door, so pay particular attention to the security of your house. Why not leave a light on at night when you leave the house unattended?

Thefts of pedal cycles are increasing of late (particularly mountain bikes) so don't leave them unattended, even for short periods of time. Many have been stolen from garden sheds and the like, so you may consider leaving them inside the house at night for extra protection. Don't forget your frame number!.

Remember, some thieves and burglars are local, and in an effort to reduce their travelling expenses may decide to operate nearer home. So, take note of anyone acting suspiciously and don't hesitate to contact the police if you are not happy about what you see.

You can contact me on Doncaster 366744

summer. It settled for a time on the roof of the houses opposite the fish shop at the end of Windle Road.

Many of us have been woken early on a Spring morning by the sound of the cuckoo. The first cuckoo usually arrives in the second or third week of April, and leaves when mating is over in July or early August. It is the only British bird which rears its young by fostering them on other birds. Last year, a young cuckoo, larger than a blackbird, was on an allotment fence, and it was fed by a small hedge-sparrow!

If you have any interesting news or information on wild-life in Hexthorpe please let us know.

Who will hear the first cuckoo this year?

.....
Editor: *Who knows the correct names for a group of ducks or swans flying?*

RECIPE Lamb Burgers

" Barbara, I've made your meat loaf from the last issue and it was delicious. Now you can try my Lamb burgers!"

Ingredients

1 lb minced lamb 1 egg 1 large onion
1 clove garlic 1 tbls. mint 3 slices bread
1 tbls. parsley salt and pepper

Method

(a food processor is best used if possible)
Chop onions (and garlic if used) very finely.
Make bread into breadcrumbs.
Mix all ingredients in processor or bowl until the mixture is bound together and looks a pasty colour.
Leave to stand for 15 minutes.
Shape small amounts into $\frac{1}{4}$ inch thick burgers.
Grill on medium setting for approximately 15 mins., turning occasionally.
For a more spicy taste, substitute curry powder - two level tablespoons - instead of mint and parsley.

Dino

Hexthorpe MONARCHS

	Played	Won	Lost
Achievements	11	5	6

The Monarchs are now in 7th place in the League with ten points.

They won in the first round, beating a Premier Team, Pilkington Juniors by 2 - 1, and then were beaten in the second round of the League Cup.

They reached the last 16 of Cup when they were beaten, in extra time, by Mexbrough Youth Club, a Premier Division team.

Best individual performance to date is captain Chris Hayton, who has scored 18 goals.

Eight of the Monarchs were ball boys for Doncaster Rovers on New Year's day.

A BIG THANK YOU to all the local trades people who gave to the tombola at our recent jumble sale. To Aspdens on Urban Road, Hexthorpe House, Betty's, A.M.D., George's Butcher, the Grove, Sue's Place, Keith's Corner Shop, the paper shop on corner of Hexthorpe Road and Mr. and Mrs. Thrush.

We are still grateful to H.W.M.C. for the original donation which helped to enter us into the league.

Dear Editor, The Hexpress,

Next time a standard electric light bulb blows, replace it with an electronic energy efficient one.

By using a standard incandescent bulb you are causing needless damage to the environment and throwing money out of the window.

The electricity generated for domestic lighting accounts for seven million tonnes of carbon dioxide each year. Carbon dioxide is a greenhouse gas but these bulbs halve this figure.

Long life bulbs are best used in areas of your home wherever you require lighting for a long period of time. Frequent switching on and off shortens the life of the bulb. Energy efficient bulbs use 80% less electricity and last 8 times longer.

These bulbs, although £10 to £15 depending on the type, should pay for themselves in less than three years and continue to save money for a further two years before they will need replacing. This assumes that you switch on at night until around 11 pm..

One 20 watt bulb fitted saves you £45 during its life an investment for you and the planet we all live on.

Martin Towers
Avondale
Old Hexthorpe
Doncaster
DN4 0JB

KILLPEST CLEANING SUPPLIES

**31 HEXTHORPE ROAD, HEXTHORPE
DONCASTER**

Your local supplier of
BLEACH £1.42 per gallon
DISINFECTANT £1.39 per gallon
WASHING UP LIQUID £1.74 per gallon

TOILET ROLLS
36 in a bag £6.65 only
PLUS Top Brand Washing Powder
and MANY MORE CLEANING ITEMS

DELIVERY SERVICE

TEL DONCASTER 730313

COSY CAFE

89 Hexthorpe Road

**HOT or COLD MEALS
ALL DAY**

Sandwiches available

Pension Day at the Post Office
- POP IN HERE for a CUPPA
28p only

Dinners £1.85 Sweets 50p
O.A.P. Dinner AND Sweet £2

Tel: 768045

People and Pets Pantry

40 Hexthorpe road

**Fresh Fruit and
Veg Daily**

the quality is really very good

Pet Food & Accessories

OPEN 7 days per week

Free Delivery in Hexthorpe

Past and Present

97 Hexthorpe Road

Day tel: Don 320738

Eve/Sun: Don 350022

WANTED

Cash paid for china cabinets, furniture
- modern or antique, wardrobes -
drawers - tables - chairs - washstands
- hallstands - dressers & clocks

Washers - Hoovers - T.V.s - Videos -
Bureaux - China - Bric-a-brac -
Ornaments - Gold and Silver

Hello Hexthorpe!

As I write this article, the New Year has just begun and I've been around Hexthorpe for three months now.

Helen and I, and our two children Naomi and Hannah moved from Bolton in, dare I say it, Lancashire, back in September, and we had a couple of temporary addresses before we could move into our new home in Old Hexthorpe.

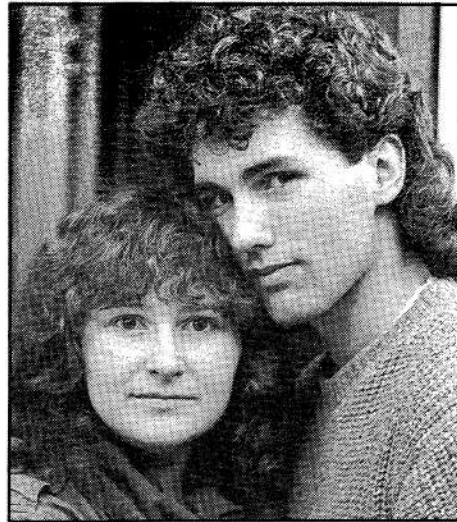
As you are probably aware from this paper's Who's Who, I am the new lay worker for the Methodist Church on Urban Road. Lay Worker?? I'll explain. 'Lay' means that I am not ordained, I am just an average 'fella' who applied for a job. The job in question deals with the administration of the Church, ensuring that events get organised and advertised. I have a role in the Church's role in the Community.

We would very much like 'feedback', 'comments' and short articles.

SEND TO

**JULIE
165 URBAN ROAD
HEXTHORPE
TEL: 854898**

Darren and Helen Stott



This has revealed itself in my involvement in the First School, taking Assemblies, and being able to spend time befriending both pupils and staff, an area I will be developing more fully. I also have a slight pastoral role as well, so here is your open invitation if you would like a visitor for a 'cuppa and a chat' please feel free to contact me Tel 857128, 131 Old Hexthorpe.

But just who am I?

I'm 29 now, and have been married to Helen (who incidentally, helps in

HANDY HINT

MOCHA COFFEE

To stretch low stocks, or for a change of drink, add half a teaspoon of cocoa or drinking chocolate to coffee and make in the same way.

the running of the weekly Middlers Club) for over 7 years.

My only real claim to fame is that I am BASS GUITARIST in the white metal band 'CRUCIFER'. (Perhaps you saw that rave review of our gig at Hall Cross School in the Free Press just before Christmas?).

Heh!. Would anyone like to introduce me to the 'Jug'?

I used to be a manager at an Asda I've spent some time as a Sound and Lighting Engineer I've been a courier But, I feel that God has called me to serve Him in full time Ministry and I will one day offer for the ordained ministry.

The welcome from people in the Hexthorpe community has been superb. If you see me in the street, say hello and introduce yourself.

And if you want a visit please let me know.

Yours in Christ,
Darren Stott

MOTHERING SUNDAY!

March 29th, traditionally the day when servant girls were permitted to visit their mothers once a year. The mid Lent Sunday was often used to visit parents and give or receive presents.

This year at the Mothers Day Sunday Service you will find 'Mustard Seed' helping out see the notices on our 'Other Events' (page two) to find out who they are.

GIFT OF BOOKS

One hundred pounds worth of new books have been presented to the Hexthorpe Branch Library.

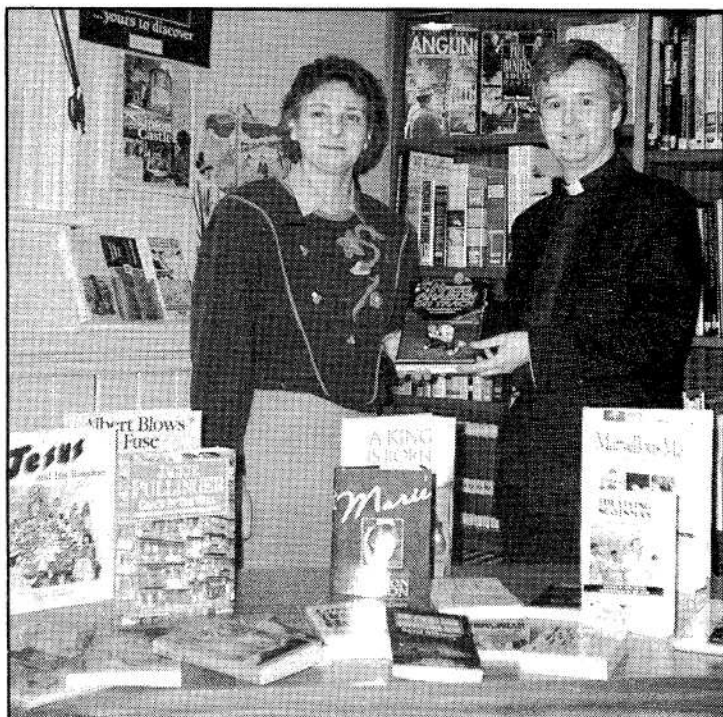
They were officially handed over by the Rev. Ian Bell, the minister of Hexthorpe Methodist Church.

The members of the Methodist Church have chosen books which are mainly in three areas.

Some are biographical - the most recent one being 'Kris Akabusi On Track' and another is 'The Hiding Place', the thrilling story of Corrie Ten Boom.

Others cover mainly social issues with a Christian viewpoint - examples are 'Living with Unemployment' and 'Marriage Matters', and 'Hope for the Troubled Heart'.

Finally there are a number of children's books - 'Albert Blows a Fuse', 'How the Bible Came To Us' and 'Marvellous Me', a book describing the wonders of the human body.



It is good that we have a library here in our community; it is to be hoped that we make good use of it so that it can be developed even more in the future.

Published by Hexthorpe Methodist Church
Printed by Leger Print. Tel: 0302 - 367850



GARDENING

At the start of the season, if you have a lot of packets of seeds it helps to get organized by printing the sowing date clearly on the packet and then putting them in a box or rubber band in order of sowing.

Don't persist with varieties which have not performed well for you. Time lost is something you can not replace; the reason for your failure could be the type of soil you have, or the site of your garden.

When sowing tiny seeds indoors like begonias, remember to surface sow. These tiny seeds contain insufficient food reserves to reach the light if they are even only slightly covered.

As the growing season starts, we wonder which fertilizer or fertilizers to use. I am for simplicity where it does not adversely affect results. Perfectly acceptable results can be achieved using a single balanced fertilizer like Growmore.

The best results are obtained if roughly half the required amount is applied about a week before planting or sowing, and the rest when the plants are half grown.

N.B.R.

HEXTHORPE YOUTH CLUB

QUIZ CHAMPION 1991

Hexthorpe Youth Club general knowledge quiz team came out top when they entered the Doncaster Metro A Quiz Competition on Monday November 25th.

The team consisting of Simon Platts, Samantha Collett and Andrew Tarren, swept aside preliminary opposition on their march to a final showdown with Warmsworth Youth Club.

In the seven round final, Hexthorpe set the early pace, but were pegged back by round four.

Round five saw Warmsworth take a point advantage the tension was mounting and round six saw Hexthorpe draw level.

The final round, and everything to play for! Hexthorpe scored seven out of nine, and clinched the title.

Metro A Quiz Champions 1991 - Well done

WALK No 5

This walk starts at Sprotbrough Bridge.

You can walk there by the river bank from Hexthorpe, as walk No 2; or take your car to the car park by the Boat Inn. We are very lucky to have such an area so near to Hexthorpe.

Take the path in front of the Boat Inn and go through the gate which is the entrance to the Sprotbrough Flash Nature Reserve.

This is designated as a Site of Special Scientific Interest, and is managed by the Yorkshire Wildlife Trust. Follow the path, with woods on your right, until you reach a left fork at a 'no horses' sign. The path rises gradually above the Flash, with good views of the opposite bank.

Turn left when some steps are reached and walk along the edge of the field.

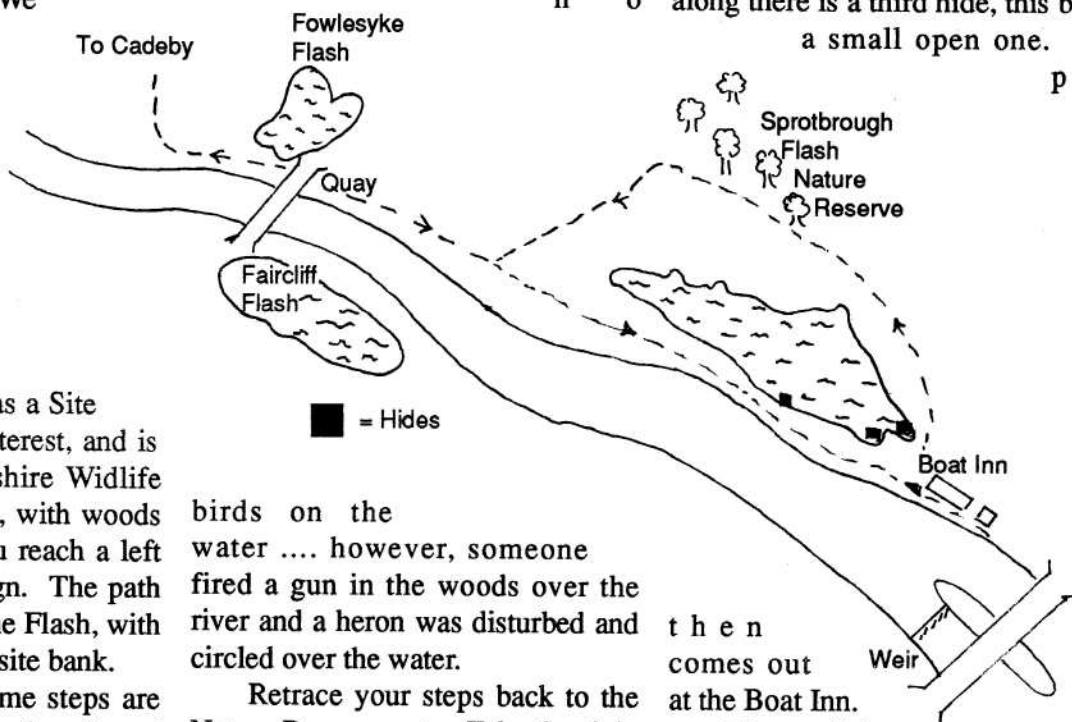
There are some good views here across the Flash back to Sprotbrough.

The path goes down some more steps until a gate is reached, which is the boundary of the reserve.

Go through the gate and the path follows the river until it reaches a

working quarry. There is a quay which is still used for loading barges, go under the railway bridge and there is Fowlsyke Flash on your right. There seemed to be

Good information is given in both hides about the birds which can be seen. Up to November last year 120 species had been sighted, 63 in November alone. A little further along there is a third hide, this being a small open one. The path



birds on the water however, someone fired a gun in the woods over the river and a heron was disturbed and circled over the water.

Retrace your steps back to the Nature Reserve gate. Take the right turn which follows the tow path close by the river.

The Sprotbrough Flash is on the left beyond a flood bank. About half a mile along this path there is a 'hide' on the left - Heron Hide. This is a covered hide with good views over the water. About two hundred yards further on is Kingfisher Hide.

then comes out at the Boat Inn.

The walking distance is about three miles, 5 1/2 miles if walking from Hexthorpe. The Nature Reserve is well worth a visit.

Alternative, well marked routes are available which go through the woods.

VALENTINE'S DAY. SO! WHO WAS ST. VALENTINE?

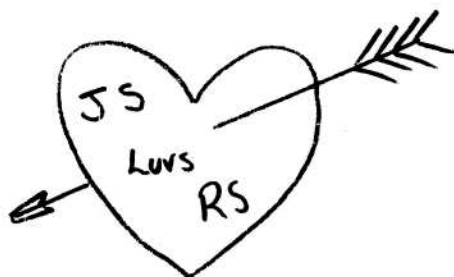
In a few days time, Feb. 14th, it will be St. Valentines day. As everyone knows it is customary on this day to send cards to one's 'Valentine', usually anonymously, bearing words of love, and pictures of cupids, transfixed hearts etc. But who was he, and what has he to do with this custom?

Not a lot it would appear!

Valentine, was a pagan priest in Rome, who was imprisoned for succouring persecuted Christians. During his imprisonment he became a Christian convert. Although he is credited with restoring the sight of the gaolers blind daughter, this did not save him, and he was executed by being clubbed to death. This was in or about the year 269 AD.

After being canonized, Feb 14th was then celebrated as St. Valentines day.

There would appear to be a second St. Valentine, who was a bishop in the early



Christian Church, in Terni in Italy, who was martyred a few years later and was also celebrated on the same date.

The ancient custom of choosing

'Valentines' seems to have only an accidental relationship with either Saint and it is really a relic of the old Roman annual festival of 'Luper Calia'. The custom was to give presents, which later changed to sending greeting cards and later Valentine cards. This last custom is recorded as early as the 16th Century, but it developed mainly in Victorian times.

The custom may also be related to the mating of birds! Valentine's day was commonly held by many to be the date when birds choose their mates and begin building nests.

Reference to this is made in the works of Chaucer and Shakespeare, which indicates the age of this belief.

Where Are They Now?

Editor: We asked Alan Whitney, whose father and grandfather before him, lived in Hexthorpe to tell us something about himself.

Looking at this old school photograph of Miss Atkinson's class at the Infant school in 1936 has truly triggered many happy memories of my early days in Hexthorpe. I'm second row from the back, second from the right.

There were picnics and football at 'The Rec', fun and games on the Flatts, and church activities; the choir, scouts, concert parties and lantern slide talks in the church hall.

I guess many people reading this piece will clearly remember the scarlet fever epidemic in 1938. Certainly all our family, including aunts, uncles and cousins, were in Isolation Hospital. What a Christmas that was!

Then September 1939 and everyone was busy digging air-raid shelters. Do you remember the one built in the playground of the Junior school? I can still recall that dank damp smell!

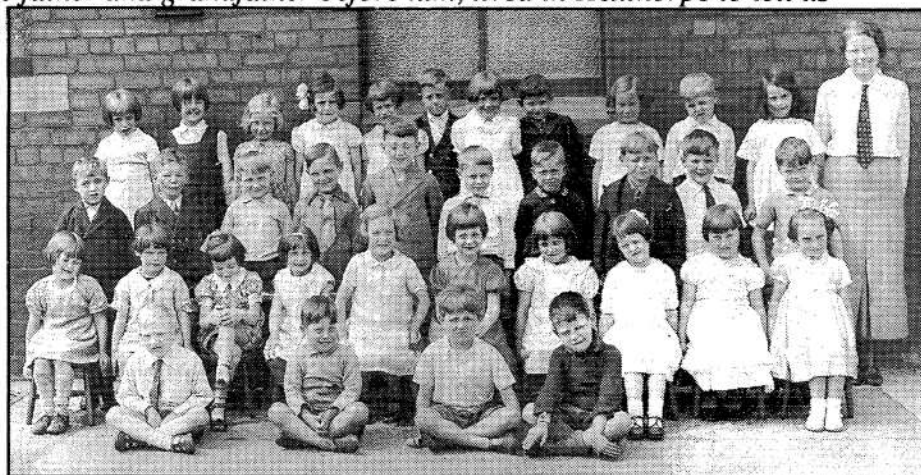
The daily bicycle ride from Bentley Avenue to the Grammar School started in September 1941, a period of my life I still treasure. Beside the academic and sporting challenges, we had during the war visits from internationally known concert artists, ballet and theatre companies; a rich education in the arts.

Music has played a great part in my life. I suppose it started with Mr. Allsop's group violin lessons at the Junior School at sixpence a time.

Then at the Grammar school there was William Appleby's influence on all who sang in an outstanding school choir.

In 1948 I was fortunate in gaining a Choral Scholarship to St. John's College, Cambridge. Beside studying for a degree, the whole three years experience was just unforgettable.

National Service followed in late 1951, and after the usual square bashing in the army I was posted to Malta. The experience of running a transport company and having some free time in the sun was a bonus.



It was in Malta that I met my wife Shirley. We married in Gillingham in 1954. I had by this time joined the Lucas group in Birmingham as a trainee. After four years as a Training officer I was appointed as a Personnel Manager.

Our daughter Philippa was born in 1956 and we moved to Peterborough in 1961, when I took a job in a large



civil engineering company. Our son David was born in Peterborough in 1963.

After five years in East Anglia I was invited to return to my old company and became involved with Industrial Relations in both the automotive and aerospace sections of the business.

We had six happy years in Lancashire, the job based in Burnley,

the family living in Clithero, then back to the midlands in 1974 when I was appointed Personnel Director of Lucas Aerospace.

Shirley and I are now enjoying our retirement in Solihull and our children are married and happily settled.

Our connection with Doncaster is kept alive as my aunt, Elsie Whitney, (90 this year) lives in Bennetthorpe and my cousin Eric lives in Tickhill and his sister Mary in Goldsbrough Road.

I revisited Hexthorpe again last year with Eric, and we had a nostalgic few hours seeing again those places we knew well as boys.

I can see again all those faces in the school photograph, and if any of them are reading this piece, I wish them all health and happiness in their retired years ahead.

.....
Editor: We hope this will be the first of a series of articles about ex - Hexthorpe residents. We invite contributions from any who were brought up in Hexthorpe and have moved away and done interesting things.

COMPETITION

Who can identify most of those on the school photograph?

Alan Whitney can name 14 out of 35!

Can you do better?

Send entries to Julie, please showing clearly who's who.